

Roselene Marostega Felker<sup>1+</sup>, Ana Paula Moreira Rovedder<sup>1</sup>, Solon Jonas Longhi<sup>1</sup>, Elias Frank Araújo<sup>2</sup>, Maureen De Moraes Stefanello<sup>1</sup>, Aline Peccatti<sup>1</sup>

### IMPACT OF *Bambusa tuldooides* MUNRO (POACEAE) ON FOREST REGENERATION

Keywords:  
Bambusoideae  
Secondary species  
Succession  
Floristic groups

**ABSTRACT:** Bamboo grove may cause changes in the structure and floristic composition of natural regeneration. This study evaluated the impact caused by *Bambusa tuldooides* Munro at natural regeneration, in riparian forest in Rio Grande do Sul, south of Brazil. Two areas were evaluated: riparian forest without bamboos (SB) as the reference area, and riparian forest dominated by *Bambusa tuldooides* (CB). In 2014, ten plots (10x10 m) were installed in each area. All individuals belonging to classes I ( $30 \leq H < 130$  cm) and II ( $CBH \leq 5$  cm) were measured and identified. Floristic composition, phytosociological indexes, Shannon diversity index, Margalef richness, Simpson dominance, Sorensen similarity, and cluster analysis by Twinspan were evaluated. Richness and absolute density decreased in CB compared to SB. The areas presented low floristic similarity, and high dominance of one or more species in both classes. Myrtaceae was the predominant botanic family in SB, especially *Campomanesia xanthocarpa*. In CB most species were secondary, as *Myrsine umbellata*, *Cupania vernalis*, and *Ocotea puberula*. Due to the large differences between SB and CB, the groups formed were restricted mostly to the species of each area. Species such as *Myrsine umbellata* (class I and II) and *Strichnos brasiliensis* (class II) appear as indicators and former of groups in CB. We concluded that high density of *Bambusa tuldooides* affect the richness and diversity of regeneration natural, changing the establishment and perpetuation of the species. Secondary species show greater potential for adaptation to these environments and can act as key species in management and recovery actions.

Histórico:  
Recebido 21/01/2017  
Aceito 05/06/2017

### IMPACTO DE *Bambusa tuldooides* MUNRO (POACEAE) NA REGENERAÇÃO FLORESTAL

Palavras chave:  
Bambusoideae  
Espécies secundárias  
Sucessão  
Grupos florísticos

**RESUMO:** Bambuzais podem acarretar alterações na estrutura e composição florística da regeneração natural. O presente trabalho avaliou o impacto causado por *Bambusa tuldooides* na regeneração natural de mata ciliar no Rio Grande do Sul, sul do Brasil. Foram avaliadas duas áreas: mata ciliar sem bambus (SB), como área de referência, e área de mata ciliar substituída por *Bambusa tuldooides* (CB). Em 2014, dez parcelas (10x10 m) foram instaladas em cada área. Todos os indivíduos pertencentes às classes I ( $30 \leq H < 130$  cm) e II ( $CAP \leq 5$  cm) foram identificados. Avaliaram-se composição florística, índices fitossociológicos, índice de diversidade de Shannon, diversidade de Margalef, Dominância de Simpson, similaridade de Sorensen e análise de agrupamento por Twinspan. Riqueza e densidade absoluta foram menores em CB, comparativamente a SB. As áreas apresentaram baixa similaridade florística e alta dominância de uma ou mais espécies em ambas as classes. Myrtaceae foi a família predominante em SB, com destaque para *Campomanesia xanthocarpa*. Em CB, a maioria das espécies foram secundárias, como *Myrsine umbellata*, *Cupania vernalis* e *Ocotea puberula*. Devido às grandes diferenças entre SB e CB, os agrupamentos formados ficaram restritos, em sua maioria, às espécies de cada área. Espécies como *Myrsine umbellata* (classe I e II) e *Strichnos brasiliensis* (classe II) aparecem como indicadoras e formadoras de grupos em CB. Conclui-se que adensamentos de *Bambusa tuldooides* afetam a riqueza e diversidade da regeneração natural, alterando o estabelecimento e perpetuação das espécies. Espécies secundárias demonstram maior potencial de adaptação a estes ambientes, podendo atuar como espécies-chave em ações de manejo e recuperação.

<sup>+</sup>Correspondência:  
rosifelker@yahoo.com.br

DOI:  
10.1590/01047760201723022297

<sup>1</sup> Federal University of Santa Maria - Santa Maria, Rio Grande do Sul, Brazil  
<sup>2</sup> CMPC Celulose Riograndense, Guaíba, Rio Grande do Sul, Brazil

## INTRODUCTION

Natural regeneration is related to several processes to maintenance of vegetal communities as nutrients availability, opening of forest clearings and competition (MARIMON et al., 2010; SANTOS et al., 2012). Studies about natural regeneration are important to comprehend the forest dynamics and structure, helping in management and monitoring of environmental changes (LARPKERN et al., 2011; LIMA et al., 2012; FUKUSHIMA et al., 2015).

Dominance of invasive exotic species is one of the most evident impacts of anthropic changes in the distribution of vegetal communities. These species can interfere in ecological processes, such as seed rain, seed bank and species recruitment (TABARELLI; MANTOVANI, 2000; CAMPANELLO et al., 2007, ELIAS et al., 2015; LIMA et al., 2012). Bamboos are inhibitors of succession by model of Connell and Slatyer (1977).

Invasive species list from Rio Grande do Sul State (RS) presents bamboos species (SEMA, 2013). Nevertheless, there are other species, such as *Bambusa tuldoidea* Munro that, even not presenting invasive characteristics (SHIRASUNA et al., 2013), change the dynamics of natural ecosystems. In the RS, this species was introduced for productive purposes resulting in great densities, mainly in the metropolitan region (DA COSTA et al., 2015).

*Bambusa tuldoidea* is a species of medium-sized and pantropical distribution, forms clumps and is widely used in the production of cellulose and agglomerated panels (MORAIS et al., 2015; SPOLIDORO, 2008).

Current studies indicate that bamboos change forest structure, floristic composition and resilience of vegetal communities (ELIAS et al., 2015; FUKUSHIMA et al., 2015). Studies about natural regeneration in bamboo-dominated forest remnants allow show impacts in vegetal community and may to indicate restoration practices. These strategies are fundamental to ecosystems with low potential for natural regeneration, due to dispersal limitations (CHAZDON, 2012; HOLL; AIDE, 2011).

The present study aims to evaluate the impact of *Bambusa tuldoidea* in natural regeneration. The hypothesis of the research is that a natural regeneration in bamboo grove is reduced and its floristic composition altered.

## MATERIAL E METHODS

### Area

The study was carried out in areas of the company CMPC Celulose Riograndense, municipality of Eldorado do Sul, in Rio Grande do Sul, the southernmost state in

Brazil. Two areas of riparian forest were evaluated, one area of reference without the presence of bamboos (SB) and the other dominated by bamboo grove (CB):

a) Reference area without bamboo (SB). Ecological corridor with approximately 10 ha, located at the coordinates 30° 9'14.51"S e 51°34'24.27"O. It presents advanced successional stage, with canopy of 18 to 20 m. It has eventual cattle grazing in the understory.

b) Bamboo grove (CB). Riparian forest degradade by bamboo grove. This area presents 2 ha and is located at the following coordinates 30 ° 9'26.89 "S and 51 ° 35'31.78" W. The bamboos canopy presents in average 16 to 18 m, with an average density 1200 stems in each 10 m<sup>2</sup>. This area presents solitary individuals of adult trees.

The area of study is located in the Central Depression of Rio Grande do Sul and presents elements of Seasonal Forest, in area of contact between the Atlantic Forest and Pampa biomes. The soils are Haplic Cambisols of granite origin, with the presence of material of origin in the A and B horizons. The region presents humid Subtropical climate with dry summer (ST UIV) (ALVARES et al., 2013).

The bamboos were introduced in the region at the end of the 18<sup>th</sup> century for supply of raw material to Fábrica de Papel e Celulose Pedras Brancas (Paper and Pulp Mill Pedras Brancas), the first of this type in Rio Grande do Sul. The plantings extended until the 1960s, when the species was substituted by eucalyptus and black wattle. However, extensive areas dominated by the species remain until nowadays, taking the place of productive spaces and of permanent preservation areas (APPs).

### Sampling

In 2014, ten sampling units of 10x10 m were systematically installed in the CB and SB areas. It was carried out the identification of all the individuals, present in the sample units of 10x10 m, belonging to two regeneration classes. In class I, individuals between 30 cm and 130 cm in height ( $30 \leq H < 130$  cm) were sampled. For class II, individuals with circumference at the height of the breast (CBH) less than 5 cm ( $CBH \leq 5$ ), regardless of height. Regenerating individuals of bamboo were not evaluated.

The identification of the species was performed directly in field and, when this was not possible, in the Herbarium of the Department of Forest Sciences (HDCF) of Universidade Federal de Santa Maria.

### Data analysis

Density and absolute frequency for each sampled species were calculated, according to Mueller-Dombois and Ellenberg (1974). In determination of diversity, the

indexes of Shannon ( $H'$ ) were used, submitted to the  $t$  test of Hutcheson (1970). Was calculated Margalef of richness (MAGURRAN, 1988) and Simpson dominance (BROWER; ZARR, 1984). For floristic similarity analysis throughout the environmental gradient it was used the Sorensen index (WOLDA, 1981).

For verification of group formation and indication of species for each cluster and sector, the method Twinspan was used (HILL, 1979), through matrix containing presence and absence data. The analysis was performed in PC-ORD program for Windows version 4.14 (McCUNE; MEFFORD, 1999).

## RESULTS

The area with bamboos (CB) presented reduced number of individuals and species, comparatively with the area without bamboos (SB) (Table 1). The CB area did not present more than 10% of the total of sampled individuals, as well as it did not reach more than 50% of the richness verified in SB, for both classes of sampling.

**TABLE 1** Structure of natural regeneration between areas with and without bamboos (CB and SB).

| Variables                  | CLASS I |     | CLASS II |     |
|----------------------------|---------|-----|----------|-----|
|                            | SB      | CB  | SB       | CB  |
| Total of individuals       | 1,408   | 85  | 638      | 26  |
| Botanical families         | 25      | 15  | 26       | 11  |
| Species                    | 62      | 27  | 59       | 12  |
| DA (ind·ha <sup>-1</sup> ) | 14,080  | 850 | 6,380    | 260 |

Where: SB = without bamboos; CB = with bamboo; class I = ( $30 \leq H < 130$  cm); class II = ( $CBH \leq 5$ ); DA = absolut density.

In SB/Class I, *Campomanesia xanthocarpa* presented the greatest number of individuals per ha (DA: 3230 ind·ha<sup>-1</sup>, FA: 100), followed by *Myrcia glabra* (DA: 1730, FA: 80), *Sorocea bonplandii* (DA: 1050, FA: 100) and *Myrsine umbellata* (DA: 980, FA: 100) (Tab. 2).

In CB/ Class I, the species of greater importance was *Cupania vernalis* (DA: 140 ind·ha<sup>-1</sup>, FA: 30) *Ocotea puberula* (DA: 130 ind·ha<sup>-1</sup>, FA: 60) and *Myrsine umbellata* (DA: 120 ind·ha<sup>-1</sup>, FA: 70) (Table 2).

For both areas, in class I, the Myrtaceae Family was the most representative, with 13 species in SB and six in CB.

In SB, in class II, Myrtaceae, again, was the most representative family (17 species). Species with the greatest distribution and density are *Campomanesia xanthocarpa* (DA: 2900 ind·ha<sup>-1</sup>, FA: 100), *Myrcia glabra* (DA: 410 ind·ha<sup>-1</sup>, FA: 80), *m n* (DA: 180 ind·ha<sup>-1</sup>, FA: 70) and *Trichilia elegans* (DA: 160 ind·ha<sup>-1</sup>, FA: 60) (Table 2).

In CB, the Sapindaceae family was the only one that presented two species and *Myrsine umbellata* was the most representative (DA: 60 ind·ha<sup>-1</sup> and FA: 40). We observe in this class, low richness, small quantity of individuals, with densities and frequencies well below the ones found in SB (Table 2).

Species dominance *sensu* Simpson exists in both areas (Table 3). For SB/Class I, species as *Campomanesia xanthocarpa*, *Myrcia glabra*, *Sorocea bonplandii* and *Myrsine umbellata* presented together 47% of the total of individuals. In CB/Class I, *Cupania vernalis*, *Myrsine umbellata* and *Ocotea puberula* represented 45% of the sampled individuals. For the class II, *Campomanesia xanthocarpa*, represented 45% of the sampled individuals in SB and *Myrsine umbellata*, 23% in CB.

Based on the Margalef index, SB appears with greater diversity than CB in class I and II. Yet, when we analyze the diversity of Shannon we do not verify significant difference between areas (Table 3).

In relation to the floristic similarity we observe that for both areas, the similarity is low (0.36 in class I and 0.20 in class II) (Table 3).

In the formation of floristic groups, the class I (Figure 1) formed the group I (G1) in the first division, with self-value of 0.3248 and included only the parcels of SB area. Indicator species of this group was *Trichilia elegans* and *Myrcia* sp.

The second division presented self-value of 0.2261, and it did not represent ecological meaning, due to the homogeneity of data. The third division presented self-value of 0.6533, including only the parcels of CB area, and originating the second group (G2). The indicator was *Myrsine umbellata*, species that presented the greatest frequency in CB, presented in approximately 70% of the sampled area.

For the class II (Figure 2) the first division of self-value 0.5230 originated two groups. The first group gathered species belonging to the SB and CB areas. As preferable ones of this group there is species of the greatest occurrence in SB, such as Myrtaceae and *Trichilia elegans* in CB. In second division with self-value 0.5240, it was formed G2, with *Strychnos brasiliensis* as indicator species and also as preferable one. In G3, it was clustered only parcels and species of SB, with *Campomanesia xanthocarpa* as indicator and, as preferable ones, a great number of species of Myrtaceae.

## DISCUSSION

The elevated importance of Myrtaceae, verified in both areas in class I, is characteristic of forest formations in Rio Grande do Sul, mainly in Seasonal Forest,

**TABLE 2** Species of class I ( $30 \leq H < 130$  cm) and class II ( $CBH \leq 5$ ) with greater representation in the areas.

| CLASS I  |               | SB     |     | CB  |    |
|--|---------------|--------|-----|-----|----|
| SPECIES*   | FAMILY        | DA     | FA  | DA  | FA |
| <i>Campomanesia xanthocarpa</i> (Mart.) O.Berg                 | Myrtaceae     | 3,230  | 100 | 40  | 20 |
| <i>Cupania vernalis</i> Cambess.                               | Sapindaceae   | -      | -   | 140 | 30 |
| <i>Eugenia uruguayensis</i> Cambess.                           | Myrtaceae     | -      | -   | 40  | 30 |
| <i>Maytenus dasyclada</i> Mart.                                | Celastraceae  | -      | -   | 30  | 10 |
| <i>Maytenus</i> sp.  | Celastraceae  | -      | -   | 50  | 50 |
| <i>Myrcia glabra</i> (O.Berg) D. Legrand                       | Myrtaceae     | 1730   | 80  | -   | -  |
| <i>Myrcia</i> sp.  | Myrtaceae     | 710    | 100 | -   | -  |
| <i>Myrsine loefgrenii</i> (Mez) Imkhan.                        | Myrtaceae     | 440    | 90  | -   | -  |
| <i>Myrsine umbellata</i> Mart.                                 | Primulaceae   | 980    | 100 | 120 | 70 |
| <i>Nectandra megapotamica</i> (Spreng.) Mez                    | Lauraceae     | 350    | 90  | -   | -  |
| <i>Ocotea puberula</i> (Rich.) Nees                            | Lauraceae     | -      | -   | 130 | 60 |
| <i>Psychotria carthagenensis</i> Jacq.                         | Rubiaceae     | -      | -   | 50  | 30 |
| <i>Psychotria</i> sp.  | Rubiaceae     | 750    | 90  | -   | -  |
| <i>Sorocea bonplandii</i> (Baill.) W.C. Burger, Lanjouw & Boer | Moraceae      | 1,050  | 100 | -   | -  |
| <i>Strychnos brasiliensis</i> Mart.                            | Loganiaceae   | -      | -   | -   | -  |
| <i>Trichilia claussenii</i> C.DC.                              | Meliaceae     | 750    | 70  | -   | -  |
| <i>Trichilia elegans</i> A. Juss.                              | Meliaceae     | 470    | 10  | 30  | 30 |
| <i>Zanthoxylum rhoifolium</i> Lam.                             | Rutaceae      | -      | -   | 20  | 20 |
| Total of plants**  |               | 14,080 | -   | 850 | -  |
| CLASS II   |               | SB     |     | CB  |    |
| SPECIES*   | FAMILY        | DA     | FA  | DA  | FA |
| <i>Campomanesia xanthocarpa</i> (Mart.) O.Berg                 | Myrtaceae     | 2,900  | 100 | 30  | 30 |
| <i>Chrysophyllum marginatum</i> (Hook. & Arn.) Radlk.          | Sapotaceae    | -      | -   | 30  | 30 |
| <i>Citrus</i> sp.  | Rutaceae      | -      | -   | 30  | 30 |
| <i>Cupania vernalis</i> Cambess.                               | Sapindaceae   | -      | -   | 30  | 20 |
| <i>Eugenia uruguayensis</i> Cambess.                           | Myrtaceae     | 250    | 30  | -   | -  |
| <i>Faramea montevidensis</i> (Cham. & Schltdl.) DC.            | Rubiaceae     | 180    | 40  | -   | -  |
| <i>Matayba elaeagnoides</i> Radlk.                             | Sapindaceae   | -      | -   | 10  | 10 |
| <i>Maytenus</i> sp.  | Celastraceae  | -      | -   | 10  | 10 |
| <i>Myrcia glabra</i> (O.Berg) D. Legrand                       | Myrtaceae     | 410    | 80  | -   | -  |
| <i>Myrcia multiflora</i> (Lam.) DC.                            | Myrtaceae     | 190    | 30  | -   | -  |
| <i>Myrcia pubipetala</i> D.Legrand                             | Myrtaceae     | 120    | 40  | -   | -  |
| <i>Myrsine umbellata</i> Mart.                                 | Primulaceae   | 120    | 70  | 60  | 40 |
| <i>Ocotea puberula</i> (Rich.) Nees                            | Lauraceae     | -      | -   | 20  | 10 |
| <i>Sebastiania</i> sp.   | Euphorbiaceae | 160    | 50  | -   | -  |
| <i>Sorocea bonplandii</i> (Baill.) W.C. Burger, Lanjouw & Boer | Moraceae      | 180    | 70  | -   | -  |
| <i>Strychnos brasiliensis</i> (Spreng.) Mart.                  | Loganiaceae   | -      | -   | 30  | 20 |
| <i>Trichilia elegans</i> A. Juss.                              | Meliaceae     | 160    | 60  | 30  | 30 |
| Total of plants**  |               | 6,380  | -   | 260 | -  |

\*Ten most representative species in the set of areas of CB and SB; Absolute density (DA: ind./ha), Absolute frequency (FA: %). \*\* Density of all plants sampled in the study area.

**TABLE 3** Floristic diversity and similarity of Class I ( $30 \leq H < 130$  cm) and II ( $CBH \leq 5$  cm) in SB and CB.

|          | CLASS I  |         | CLASS II |         |
|----------|----------|---------|----------|---------|
|          | SB       | CB      | SB       | CB      |
| Simpson  | 0,9084   | 0,9143  | 0,7811   | 0,8787  |
| Shannon  | 3,013 a* | 2,811 a | 2,625 a  | 2,284 a |
| Margalef | 8,552    | 5,627   | 8,981    | 3,376   |
| Sorensen | 0,36     |         | 0,20     |         |

\* Values followed by the same letter in the line, by class interval, did not differ significantly by the Hutcheson test at the 0.05% error probability level. Abbreviations: without bamboo (SB), with bamboo (CB).

highlighting the riverside formations (MILANESI; LEITE, 2014; VENZKE, 2012).

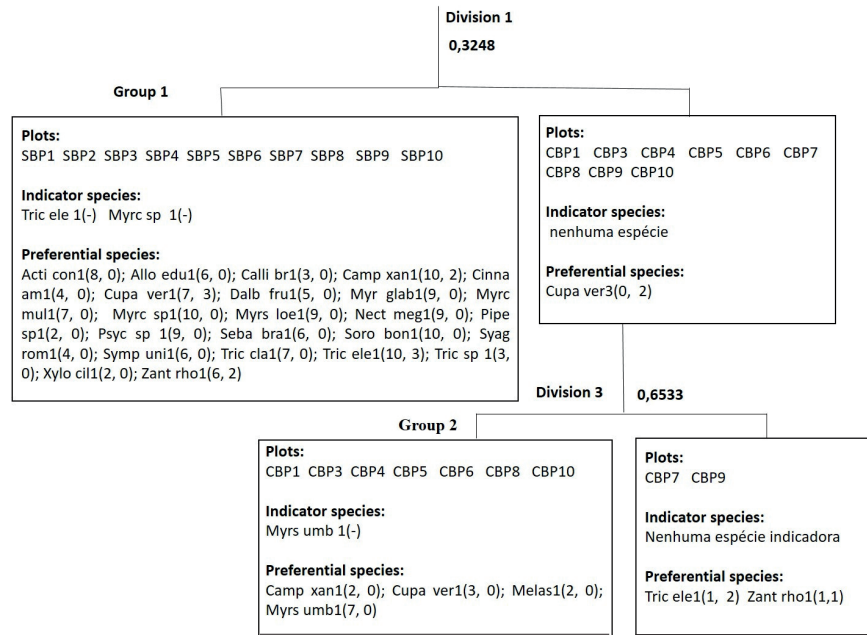
The expressive difference in the structure and richness of vegetation between SB and CB can be related to the competition by resources (space, water and nutrients) (SILVÉRIO et al., 2010), reduction of incident luminosity (GRISCOM; ASHTON, 2002), among other alterations.

Silvério et al. (2010) studying the impact of cluster of *Actinocladum verticillatum* bamboo over the woody vegetation of two physiognomies of Cerrado, also noted that the number of individuals, species, genera, families and densities were higher in areas without bamboos.

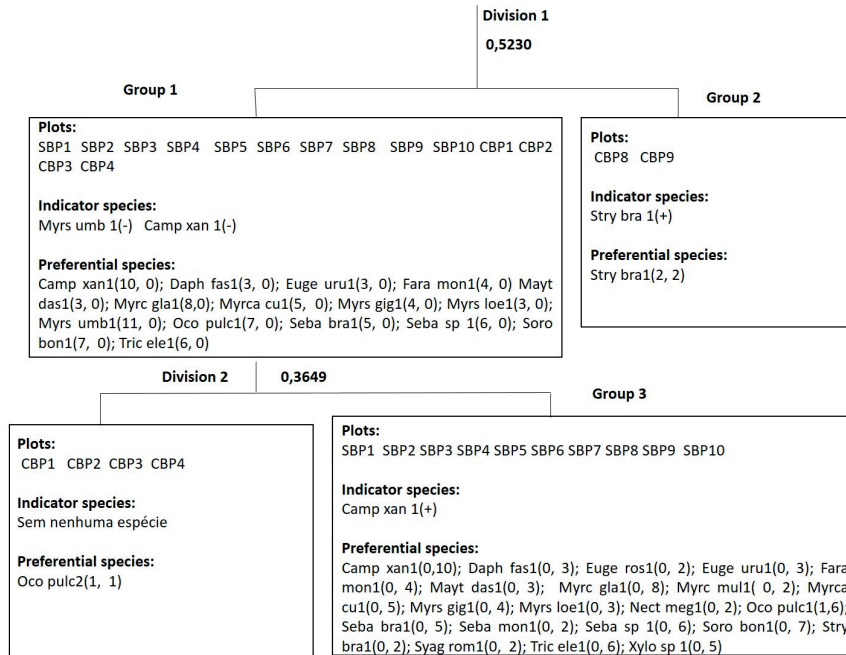
There are evidences that the bamboos inhibit the recruitment in all the classes of size, resulting of the low rate of incident luminosity, hydric stress, competition for humidity of soil and physical damages, caused by the excessive accumulation of litter in young plants (GRISCOM; ASHTON, 2002).

The low richness of species in CB indicates the difficult in formation of superior strata, affecting the local ecological succession, what hinders the reconstitution of the Permanent Preservation Area. The recruitment of individuals for superior classes is impaired, once that the presence of bamboos decreases the growth rate





**FIGURE 1** Groupings of forest regeneration present in class I ( $30 \leq H < 130$  cm) in areas SB and CB. Abbreviations: *Trichilia elegans* (Tric ele); *Myrcia* sp. (Myrc sp); *Actinostemon concolor* (Acti conc); *Allophylus edulis* (Allo edu); *Calliandra brevipes* (Calli br); *Campomanesia xanthocarpa* (camp xan); *Cinnamomum amoenum* (Cinnaam); *Cupania vernalis* (Cupa ver); *Dalbergia frutescens* (Dalb fru); *Myrcia glabra* (Myr gla); *Myrcia multiflora* (Myrc mul); *Myrsine loefgrenii* (Myrs loe); *Myrsine umbellata* (Myrs umb); *Nectandra megapotamica* (Nect meg); *Pipper* sp. (Pipe sp.); *Psychotria* sp. (Psyc sp); *Gymnantes klotzchiana* (Seba bra); *Sorocea bonplandii* (Soro bom); *Syagrus romanzoffiana* (Syag rom); *Symplocos uniflora* (Symp uni); *Trichilia clauseni* (Tric cla); *Trichilia* sp. (Tric sp); *Xylosma ciliatifolia* (Xylo cil); *Zanthoxylum rhoifolium* (Zant rho); *Melastomataceae* (Melas);



**FIGURE 2** Groupings of forest regeneration present in class II ( $CBH \leq 5$ ) in the areas SB and CB. Abbreviations: *Campomanesia xanthocarpa* (Camp xan); *Daphnopsis fasciculata* (Daph faz); *Eugenia uruguayensis* (Euge uru); *Eugenia rostrifolia* (Euge ros); *Faramea montevidensis* (Fara mon); *Maytenus dasyclada* (Mayt das); *Myrcia glabra* (Myc gla); *Myrcia multiflora* (Myrc mul); *Myrciaria cuspidata* (Myrc cu); *Myrsine grandiflora* (Myrs gig); *Myrsine loefgrenii* (Myrs loe); *Myrsine umbellata* (Myrs umb); *Ocotea pulchela* (Oco pulc); *Gymnantes klotzchiana* (Seba bra); *Sebastiania* sp. (Seba sp); *Sorocea bonplandii* (Soro bom); *Trichilia elegans* (Tric ele); *Strychnos brasiliensis* (Stry bra); *Nectandra megapotamica* (Nect meg); *Syagrus romanzoffiana* (Syag rom); *Xylosma ciliatifolia* (Xylo sp).

and survival, causing stagnation in forest succession (GRISCOM; ASHTON, 2002; ELIAS et al., 2015).

Bamboo species may occupy the canopy of forest areas and hinder or hinder the development of native forest regeneration, causing a change in the structure and diversity of plant communities (CAMPANELLO et al., 2007, SANTOS et al., 2012, SANTOS et al., 2015, ELIAS et al., 2015) resulting in loss of biodiversity in tropical ecosystems (SILVÉRIO et al., 2009). Outside its natural habitat, the bamboos do not have natural predators, neither individuals that compete in equality for the capture of food and sun light, which can result in environmental imbalance in the place where this species was introduced (DA SILVA et al., 2011).

In relation to the ecological indexes, the dominance of *Campomanesia xanthocarpa* and *Myrsine umbellata* in SB and CB areas. The relevance of *Myrsine umbellata* in the inhospitable CB environment characterizes it as strongly tolerant and therefore valuable for use in ecological restoration in environments with inhibitory vegetation (CONNEL; SLATYER, 1977).

Margalef index, which has as basis the numerical distribution of different species, shows greater diversity of SB in class I and II. In relation to diversity, Margalef index, which has as basis the numerical distribution of different species, we observed greater diversity of WB in class I and II. Kaniwski et al. (2012) obtained index of 3.81 for the forest regeneration and considered the area with low specific richness.

The diversity of Shannon probably was not significant due the expressive number of rare species in WB. The low similarity in areas of the same forest typology and spatially near with each other can be explained by the presence of bamboos, once that these ones change the establishment and development of a great number of native species (LIMA et al., 2007) generating competition for resources, continuous shading and allelopathic effects (GRISCOM; ASHTON, 2002).

Studies about the influence of bamboo in forest succession in China (TAYLOR; ZISHENG, 1988) and in Japan (TANAKA, 1988) attributed the low density of trees, seedlings and young plants to the reduced levels of occurring light in the low story of bamboo. The light is not the only factor of restriction of forest succession in these environments, factors as density of clumps, competition for nutrients and allelopathy can exert negative effect in floristic composition, micro-climate and structure of litter (GRISCOM; ASHTON, 2006).

In relation to the floristic groups, the indicator species of G1, *Trichilia elegans* and *Myrcia* sp., observed in great density and frequency throughout the whole WB sector belongs to abundant genera in low story of seasonal forest (VENZKE, 2012; BÜNDCHEN et al., 2015).

*Trichilia elegans* exerts influence in forest succession, and it is found with elevated density and frequency in the regeneration of seasonal forests (STAGGEMEIER; GALETTI, 2007). The preferable ones of G1 are abundant in low story of late forests (TABARELLI; MANTOVANI, 2000; KOCH et al., 2010).

In G2, *Myrsine umbellata*, the indicator species can be related to their ecological characteristics, which defines who understory species of great ecological plasticity (SANTOS et al., 2012), therefore adapted to the shaded environments. Densification of bamboos affects the development of pioneers and initial secondary species, as far as it causes the decreasing of light rate and closing of canopy in tropical forest (TABARELLI; MANTOVANI, 2000; CAMPANELLO et al., 2007).

In Montane Atlantic forest in southeast of Brazil, the more tolerant species to densification of bamboo belong to *Ocotea* and *Myrsine*, due to its characteristics of ecological adaptability (TABARELLI; MANTOVANI, 2000). Among the preferable species we highlight *Cupania vernalis*, occurring both within the forest, at a more advanced stage of forest succession (ÁVILA et al., 2011).

In class II, *Myrsine umbellata* presented significant occurrence in both areas, while *Campomanesia xanthocarpa* was the most representative species in SB, both indicators of G1. As preferable ones of this group there is species of greater occurrence in SB, such as *Myrtaceae* and *Trichilia elegans* in CB.

In G2, *Strychnos brasiliensis*, indicator and preferable species appears as the only species occurring in the parcels eight and nine of CB. Campanello et al. (2007) also found *Strychnos brasiliensis* in the regeneration of semi-seasonal forest dominated by bamboos and lianas, and it is one of the most representatives in this environment.

Species that is resistant to the shading environment such as *Myrsine umbellata* and *Strychnos brasiliensis*, can be important in the process of management and recovery of areas dominated by bamboo. Bitariho and McNeilage (2007) highlight that secondary forest species contributed to the decrease of forest cover of bamboos in Bambuno, southwest of Uganda.

In G3, we highlight the importance of *Campomanesia xanthocarpa* in the formation of groups, which can be related to its good adaptation in environments with periodic flooding, typical of riparian forest (CARVALHO; NAKAGAWA, 2000). Besides that, the production of fruit in great quantity and very appreciated by the wild fauna (CARVALHO; NAKAGAWA, 2000) contributes to the species to have great dispersion in the area.

## CONCLUSION

*Bambusa tuldoides* impacted the forest regeneration. Establishment and recruitment of native species were reduced.

The richness and diversity of natural regeneration were affected by the presence of bamboos.

Secondary species demonstrates greater potential of adaptation in environments dominated by bamboo grove, and it can act as key-species in future actions of management and recovery.

## REFERENCES

- ALVARES, C. A.; STAPE, J. L.; SENTELHAS, P. C.; GONÇALVES, J. L. M.; SPAROVEK, G. Köppen's climate classification map for Brazil. **Meteorol Zeitschrift**, v. 22, p.711-28, 2013.
- ÁVILA, A. L. DE.; ARAUJO, M. M.; LONGHI, S. J.; GASPARIN, E. Caracterização da vegetação e espécies para recuperação de Mata ciliar, Ijuí, RS. **Ciência Florestal**, v. 21, n. 2, p. 251-260, 2011.
- BITARIHO, R.; McNEILAGE, A. Population structure of montane bamboo and causes of its decline in Echuya Central Forest Reserve, South West Uganda. **African Journal of Ecology**, v. 46, n.3, p. 325-332, 2007.
- BROWER, J. E.; ZAR, J. H. **Field & laboratory methods for general ecology**. 2. ed. Dubuque, Iowa: Wm. C. Brown Publishers. 1984, 226p.
- BÜNDCHEN, M.; BOEGER, M.R.T.; REISSMANN, C.B. Estrutura foliar de espécies lenhosas de dossel e sub-bosque em uma floresta subtropical do sul do Brasil. **Iheringia**, v. 70, n. 1, p. 105-114, 2015.
- CAMPANELLO, P. I; GENOVEVA GATTI, M. G.; ARES, A.; MONTTI, L.; GOLDSTEIN, G. Tree regeneration and microclimate in a liana and bamboo-dominated. **Ecology and Management**, v. 252, p. 108-117, 2007.
- CARVALHO, N. M.; NAKAGAWA, J. **Sementes: ciência, tecnologia e produção**. Jaboticabal: FUNEP, 2000. 588p.
- CHAZDON, R. Regeneração de florestas tropicais. **Boletim do Museu Paraense Emílio Goeldi. Ciências Naturais**, v.7, n.3, p. 195-218, 2012.
- CONNELL, J. H.; SLATYER, R. O. Mechanisms of succession in natural communities and their role in community stability and organization. **Amer. Naturalist**, v.111, p.1119-1144, 1977.
- DA COSTA, L. F. Indústria pedras brancas: o resgate de sua memória. [online September, 2015]. Available at: <http://guaiba.ulbra.br>. Accessed in: 10 January 2017.
- DA SILVA, I. F.; PEREIRA, D. S.; SILVA, S. R. F. Estudos morfológicos do bambu (*Bambusa cf. vulgaris* L.), uma espécie invasora em área de mata atlântica no parque municipal de Maceió-Alagoas. **Revista Semente**, v. 6, n. 6, p. 99-110, 2011.
- DE ESPÍNDOLA, M. B.; BECHARA, F. C.; BAZZO, M. S.; REIS, A. Recuperação ambiental e contaminação biológica: aspectos ecológicos e legais. **Biotemas**, v.18, n.1, p. 27-38, 2005.
- ELIAS, F.; MARIMON, B.S.; NEVES, E. C.; MORANDI, P. S.; REIS, S. M.; MEWS, H.A.; MARIMON-JÚNIOR, B. Regeneração de espécies lenhosas sob a influência do bambu *Actinocladum verticillatum* (Nees) McClure ex Soderstr. (Poaceae) em cerradão e cerrado típico na transição Cerrado-Amazônia. **Revista brasileira de Biociências**, v.13, n.2, p. 68-78, 2015.
- FUKUSHIMA, K.; USUI, N.; RYO O.; TOKUCHI, N. Impacts of moso bamboo (*Phyllostachys pubescens*) invasion on dry matter and carbon and nitrogen stocks in a broad-leaved secondary forest located in Kyoto, western Japan. **Plant Species Biology**, v. 30, n. 2, p. 81-95, 2015.
- GRISCOM, B. W.; ASHTON, P. M. S. Bamboo control of forest succession: *Guadua sarcocarpa* in Southeastern Peru. **Forest Ecology and Management**, v. 175, p.445-454, 2002.
- GRISCOM, BW.; ASHTON, P. M. S. A self-perpetuating bamboo disturbance cycle in a Neotropical forest. **Journal of Tropical Ecology**, v. 22, n. 5, p. 587-597, 2006.
- HILL, M. O. **Twinspan: a fortran program for arranging multivariate data in an ordered two-way table by classification of the individuals and attributes**. Ithaca: Cornell University, 1979.
- HOLL, K. D.; AIDE, T. M. When and where to actively restore ecosystems? **Forest Ecology and Management**, v. 261, n.10, p.1558-1563, 2011.
- HUTCHESON, K. A. Test for comparing diversities based on the Shannon formula. **Journal Theory Biology**, v. 29, p. 151 - 154, 1970.
- KANIESKI, M. R.; LONGHI, S. J.; NARVAES, I. S.; SOARES, P. R. C.; LONGHI-SANTOS, T.; CALLEGARO, R. M. Diversidade e padrões de distribuição espacial de espécies no estágio de regeneração natural em São Francisco de Paula, RS, Brasil. **Floresta**, v. 42, n.3, p. 509 - 518, 2012.
- KOCH, A.K.; DA SILVA, P. C.; SILVA, C. A. Biologia reprodutiva de *Psychotria carthagenensis* (Rubiaceae), espécie distílica de fragmento florestal de mata ciliar, Centro-Oeste do Brasil. **Rodriguésia**, v. 61, n. 3, p. 551-558, 2010.
- LARPKERN, P.; MOE, S. R.; TOTLAND, Ø. Bamboo dominance reduces tree regeneration in a disturbed tropical forest. **Oecologia**, v. 165, p.161-168, 2011.

- LIMA, R. A. F.; DÉBORA C. ROTHER, D. C.; MULER, A. E.; LEPSCH, I. F.; RODRIGUES, R. R. Bamboo overabundance alters forest structure and dynamics in the Atlantic Forest hotspot. **Biological Conservation**, v. 147, p. 32–39, 2012.
- MAGURRAN, A. E. **Ecological diversity and its measurements**. Princeton: Princeton University Press, 1988. 192p.
- MARIMON, B. S.; FELFILI, J. M.; LIMA, E. S.; DUARTE, W. M. G.; MAROMON-JÚNIOR, B. Environmental determinants for natural regeneration of gallery forest at the Cerrado/Amazonia boundaries in Brazil. **Acta Amazonica**, n. 40, n. 1, p. 107-118, 2010.
- McCUNE, B.; MEFFORD, M. J. PC-ORD version 4.14: Multivariate analysis of ecological data. Glaneden Beach: MjM Software Design, 1999. 237p.
- MEWS, H. A.; SILVÉRIO, D. V.; LENZA, E.; MARIMON, B. S. Influência de agrupamentos de bambu na dinâmica pós-fogo da vegetação lenhosa de um cerrado típico, Mato Grosso, Brasil. **Rodriguésia**, v.64, n.2, p. 211-221, 2013.
- MILANESI, L. DE S.; LEITE, S. L. DE C. Fitossociologia de espécies arbóreas em dique marginal de floresta ribeirinha no Rio Grande do Sul, Brasil e comparação com ambientes aluviais e não aluviais. **Revista brasileira de Biociências**, v.12, n.2, p.72-80, 2014.
- MORAIS, W. W. C.; HASELEIN, C. R.; SUSIN, F.; VIVIAN, M. A.; MORAIS, J. B. F. Propriedades físico-mecânicas de painéis aglomerados com *Bambusa tuldoidea* e *Pinus taeda*. **Ciência Florestal**, v. 25, n. 4, p. 1015-1026, 2015.
- MUELLER-DOMBOIS, D.; ELLENBERG, H. **Aims and Methods of Vegetation Ecology**. New York: John Wiley & Sons, 1974. 547p.
- SANTOS, K. F.; FERREIRA, T. D. E. S.; HIGUCHI, P.; DA SILVA, A. C.; VANDRESEN, A. B.; DA COSTA, A.; SPADA, G.; SCHMITZ, V.; DE SOUZA, F. Regeneração natural do componente arbóreo após a mortalidade de um maciço de taquara em um fragmento de floresta ombrófila mista em Lages – SC. **Ciência Florestal**, v. 25, n. 1, p. 107-117, 2015.
- SANTOS, S. C.; BUDKE, J. C.; MULLER, A. Regeneração de espécies arbóreas sob a influência de *Merostachys multiramea* Hack. (Poaceae) em uma floresta subtropical. **Acta Botanica Brasilica**, v. 26, n. 1, p. 218-229, 2012.
- SCARIOT E. C.; REIS A. Riqueza e estrutura florística de corredores ciliares em regeneração natural no planalto norte catarinense, sul do Brasil. **Perspectiva**, v.34, n.125, p. 53-65, 2010.
- SECRETARIA DO MEIO AMBIENTE (SEMA). Portaria nº 79 de 31/10/2013. Reconhece a lista Espécies Exóticas Invasoras RS e demais classificações e normas de controle e outras providências. Available at: <http://docplayer.com.br/16719196-Portaria-sema-no-79-de-31-10-2013.html>. Accessed in: 10 abril 2017.
- SHIRASUNA, R. T.; FILGUEIRAS, T. DE. S.; BARBOSA, L. M. Poaceae do Rodoanel Mario Covas, Trecho Sul, São Paulo, SP, Brasil: florística e potencial de uso na restauração de áreas degradadas. **Hoehnea**, v.40, n.3, p. 521-536, 2013.
- SILVÉRIO, D. V.; MEWS, H. A.; LENZA, E.; MARIMON, B. S. Impactos do agrupamento do bambu *Actinocladum verticillatum* (Nees) McClure ex Soderstr. (POACEAE) sobre a vegetação lenhosa de duas fitofisionomias de Cerrado na transição Cerrado-Floresta Amazônica. **Acta Amazonica**, v.40, n.2, p. 347-356, 2010.
- SPOLIDORO, P. V. **Características dendrométricas e propriedades físicas dos colmos de *Bambusa vulgaris* e *Bambusa tuldoidea***. 2008. 55 f. Mestrado. Universidade Federal Rural do Rio de Janeiro, Rio de Janeiro, 2008.
- STAGGEMEIER, V. G.; GALETTI, M. Impacto humano afeta negativamente a dispersão de sementes de frutos ornitocóricos: uma perspectiva global. Ararajuba. **Revista Brasileira de Ornitologia**, v.15, n.2, p.281-287, 2007.
- TABARELLI, M.; MANTOVANI, W. Gap-phase regeneration in a tropical montane forest: the effects of gap structure and bamboo species. **Plant Ecology**, v. 148, p. 149–155, 2000.
- TANAKA, N. Tree invasion into patchy dwarf-bamboo thickets within a climax beech-fir forest in Japan. In: DURING, J. J.; WERGER, M. J. A.; WILLEMS, J. H. (Eds.). **Diversity and Pattern in Plant Communities**. The Hague: Academic Publishing. p.253-261, 1998.
- TAYLOR, A. H.; ZISHENG, Q. Regeneration patterns in old-growth Abies-Betula forests in the Wolong natural reserve, Sichuan. **Journal Ecology**, v.76, p.1204-1218, 1988.
- VENZKE, T. S. Florística de comunidades arbóreas no Município de Pelotas, Rio Grande do Sul. **Rodriguesia**, v.63, n.3, p. 571 – 578, 2012.
- WOLDA, H. Similarity indices, sample size and diversity. **Oecologia**, v.50, n.3, p. 296-302, 1981.